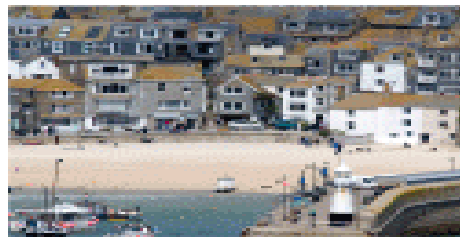
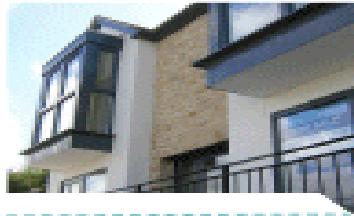


# Neighbourhood Planning

Update • April 2019

## Quick links

- [Current Consultations](#) • [Government Legislation](#)
- [Toolkit and guide notes](#) • [Other Information](#)
- [Town, Parish & City Council Online Mapping](#)



## Welcome to the Neighbourhood Planning e-bulletin for April 2019

This month, we had two neighbourhood plans successful at Referendum, two plans have passed examination, one parish has designated their Neighbourhood area and a number of parishes are carrying out their pre-submission consultation.

We have an update on the Creating Great Green Spaces event held in April, some new and updated guidance notes are available and our next round of Neighbourhood Planning Surgeries will be held in June. Further information and the dates are in the bulletin.

Neighbourhood Planning Team

[www.cornwall.gov.uk](http://www.cornwall.gov.uk)

## Neighbourhood Planning Surgeries

The next round of Neighbourhood Planning surgeries will be held in June. This will provide Steering Groups with an opportunity to speak to Neighbourhood Planning officers about any queries and be provided with some guidance on the development of their plan. Each steering group can book a 45 minute slot, which will need to be booked advance. There will be the opportunity to speak to officers from other services within Cornwall Council if you book well in advance, and subject to officer availability.

If you are interested in attending one of the surgeries please e-mail the Neighbourhood Planning Team at [Neighbourhoodplanning@cornwall.gov.uk](mailto:Neighbourhoodplanning@cornwall.gov.uk).

The next round of surgeries will be held on the following dates, between 9am and 4pm:

- Monday 3<sup>rd</sup> June - Dolcoath Offices, Camborne
- Friday 14<sup>th</sup> June - Pydar House, Truro
- Friday 7<sup>th</sup> June - Penwinnick House, St Austell
- Friday 14<sup>th</sup> June- Chy Trevail, Bodmin
- Wednesday 5<sup>th</sup> June- Luxstowe House, Liskeard
- Tuesday 18<sup>th</sup> June - St John's Hall, Penzance

If you are unable to attend an NDP surgery due to the Royal Cornwall Show please contact us to arrange an alterative appointment.

## Neighbourhood Planning in Cornwall

**128**

### Town and Parish Councils submitted Designation Applications

**118**

### Designated Areas

This includes 5 cluster Neighbourhood Plans where two or more parishes are working together.

**39**

### Pre-Submission Consultations held

St Eval, Quethiock, Roseland Peninsula, St Ives, St Cleer, Bude-Stratton, St Minver Parishes, Rame Peninsula, Roche, Mevagissey, Gwinear-Gwithian, Feock, Withiel, North Hill, South Hill, St Erth, Liskeard, Falmouth, Lanlivery, Lanreath, St Mewan, Crantock, Hayle, Landrake and St Erney, Newquay, Lanner, Wadebridge with Egloshayle and St Breock, Illogan, Lostwithiel, Luxulyan, Polperro and Lansallos, St Agnes, Landulph, St Stephens by Launceston, Gwennap, Crowan, Chacewater, St Erme, Fowey, St Ender

## Designations:

From the 1<sup>st</sup> October 2016, local authorities no longer need to publish designation applications and consult people who live, work or carry out business in the area as long as the application is in conformity with the parish boundary as set out in the Neighbourhood Planning Regulations 2012/16 5A (3).

Cornwall Council will continue to consult statutory organisations when designation applications are submitted. A report will be collated providing initial information and guidance from these organisations to support town or parish councils during the early stages of developing their Neighbourhood Plan.

[Mabe](#) Parish Council have designated their Neighbourhood Area.

Colan and St Trudy parishes have agreed to develop a neighbourhood plan and are looking at designating their Neighbourhood area.

## Strategic Environmental Assessment Screening (SEA):

[Calstock](#), [Falmouth](#), [Devioc](#), [St Cleer](#) and Werrington NDP's are currently being screened for SEA.

**37**

### Plan Proposals Submitted

St Eval, Quethiock, Roseland Peninsula, St Ives, Truro and Kenwyn, St Minver Parishes, Bude-Stratton, Roche, Rame Peninsula, Gwinear-Gwithian, North Hill, South Hill, Lanreath, Feock, Mevagissey, St Erth, Withiel, Liskeard, St Mewan, Crantock, Hayle, Lanlivery, Landrake with St Erney, Newquay, Lanner, Polperro and Lansallos, Illogan, Lostwithiel, St Agnes, Chacewater, Luxulyan, Landulph, Crowan, St Stephen by Launceston, Fowey, Gwennap, St Erme

**30**

### Examinations held

St Eval, Quethiock, Roseland Peninsula, St Ives, Truro and Kenwyn, St Minver Parishes, Roche, Bude-Stratton, Rame Peninsula, Gwinear – Gwithian, North Hill, Lanreath, South Hill, Feock, Withiel, St Mewan, Mevagissey, Crantock, Hayle, St Erth, Liskeard, Landrake with St Erney, Lanlivery, Polperro and Lansallos, Lanner, Lostwithiel Illogan, Newquay, Landulph, St Agnes

**28**

### Referendums held

St Eval, Quethiock, Roseland Peninsula, St Ives, Truro & Kenwyn, Bude–Stratton, Rame Peninsula, St Minver Parishes, Roche, Gwinear-Gwithian, North Hill, South Hill, Lanreath, Feock, Withiel, St Mewan, Crantock, Hayle, St Erth, Mevagissey

## Pre-Submission Consultation:

[Looe NDP](#) consultation runs until 10<sup>th</sup> May 2019.

[St Cleer](#) NDP consultation runs until 19<sup>th</sup> May 2019.

[Ludgvan NDP](#) consultation runs until 13<sup>th</sup> May 2019.

The guide note for this consultation stage has been updated. See the Toolkit section for information.

## Plan Proposals Statutory Consultation:

[St Erme](#) and [Gwennap](#) NDP consultations will run until 16<sup>th</sup> May 2019.

## Examination:

[Fowey NDP](#) examination will commence soon. Please check the website for further updates. The independent examiner appointed is Deborah McCann.

[St Stephen by Launceston Rural NDP](#) is currently at examination and the independent Examiner is Martin Lee

[Chacewater NDP](#) is currently at examination and the independent Examiner is Deborah McCann.

[Luxulyan NDP](#) is currently at examination and the independent Examiner is Liz Beth.

[Crowan NDP](#) is currently at examination and the independent Examiner is Barbara Maksymiw.

## Referendum:

[Illogan](#) and [Newquay](#) NDPs were successful at Referendum on 11<sup>th</sup> April 2019.

[St Agnes](#) and [Landulph](#) NDP examinations are complete. Further information on the Referendums will be published when available.

## Made Neighbourhood Plans:

No are no further made plans.

Liskeard, Landrake with St Erney, Lanlivery, Polperro & Lansallos, Lanner, Lostwithiel, Newquay, Illogan

26

### Made Plans

St Eval, Quethiock, Roseland Peninsula, St Ives, Truro and Kenwyn, Bude – Stratton, Rame Peninsula, Roche, St Minver Parishes, Gwinear-Gwithian, North Hill, South Hill, Lanreath, Feock, Withiel, St Mewan, Crantock, Hayle, St Erth, Mevagissey, Liskeard, Landrake with St Erney, Lanlivery, Polperro & Lansallos, Lostwithiel, Lanner,

For more information or if you would like to contact us please email the [Neighbourhood Planning Team](#).

### Neighbourhood Planning Toolkit links

- [Neighbourhood Planning in Cornwall](#)
- [Neighbourhood Development Plan Proposals](#)
- [Neighbourhood Planning Examinations and Referendums](#)
- [Neighbourhood Planning Guide Notes and Template](#)

## Toolkit and Guidance Notes

We have a number of [guidance notes](#) available on the toolkit. The following guidance has been updated:

- [Pre-submission Consultation](#) (updated consultee contacts since March e-bulletin)
- [Wildlife, trees and woodland](#)
- [Local Green Space and Green Infrastructure](#)

## Government Legislation

### Neighbourhood Planning Regulations 2012 Amendment

The Ministry of Housing, Communities and Local Government have amended the Neighbourhood Planning Regulations 2012 and added a [basic condition](#) that parishes will need to consider when developing a plan for their area. This came into force on 28<sup>th</sup> December 2018. The basic condition is 'The making of the neighbourhood development plan does not breach the requirements of Chapter 8 of Part 6 of the Conservation of Habitats and Species Regulations 2017(3)'.

The regulations allow neighbourhood plans and development orders in areas where there could be likely significant effects on a European protected site to be subject to an 'Appropriate Assessment' to demonstrate how impacts will be mitigated, in the same way as would happen for a planning application. The amendment is in response to the 'People Over Wind & Sweetman v Coillte Teoranta' case where the Court of Justice of the European Union published its ruling on 13<sup>th</sup> April 2018.

Local authorities and Independent examiners will need to consider the basic condition when carrying out the legal compliance check when a plan is formally submitted and at the examination stage of a neighbourhood plan. We will update our Basic Conditions Statement template to help you demonstrate compliance with this basic condition. If you have any queries about the Regulations please contact the Neighbourhood Planning Team.

## Useful web links

- [My Community](#)
- [Neighbourhood Planning Bill](#)
- [Cornwall Local Plan](#)
- [Neighbourhood Planning Roadmap Guide](#)
- [Neighbourhood Planning Regulations](#)
- [National Planning Policy Framework](#)
- [Upfront bulletin](#)
- [Cornwall Community Network Area](#)

## Other Information

### Creating Great Green Spaces Event Update

A free event aiming to provide inspiration and advice to parishes 'creating great green spaces' was held at Heartlands on 24<sup>th</sup> April and was very well attended. Topics included encouraging natural play and equipment, creating biodiverse spaces, promoting inter-generational play and use of spaces and practical advice on safety.

Feedback from the day has been overwhelmingly positive and the presentation slides are available to download [here](#).

A [new guide note](#) that supports neighbourhood planning groups to designate local green space and improve their green infrastructure is available on the Neighbourhood Planning Toolkit.

### Formally Submitting your Neighbourhood Plan

It is important to check through the neighbourhood plan documents before formally submitting them to Cornwall Council. You must include your draft Neighbourhood Plan document, a basic conditions statement and a Consultation statement as set out in the Regulations.

The basic conditions statement must include the designation application, map and decision notice and the Strategic Environmental Assessment letter and screening report from Cornwall Council. The examiner will need to examine the Documents as part of the examination process.

If you have produced an equality impact assessment or Local Landscape Character Assessment as part of the Neighbourhood Plan process, you must formally submit the documents with the Neighbourhood plan as they are part of the evidence base.

It is good practice to submit an Evidence Base document. This includes information about the consultation held, Steering group or working group meeting agendas and minutes, and examples of surveys or leaflets distributed.

We would recommend asking another steering group member to check through the documents to make sure the web links still work and the appendices are included. It is a huge task pulling all the information together and an achievement for getting this far through the neighbourhood planning process. So it is important not to rush when formally submitting your plan.

You can e-mail [neighbourhoodplanning@cornwall.gov.uk](mailto:neighbourhoodplanning@cornwall.gov.uk) if you have any queries.

Some of the information on this bulletin is taken from the Locality website.